

SPLASHTOP BUSINESS ACCESS



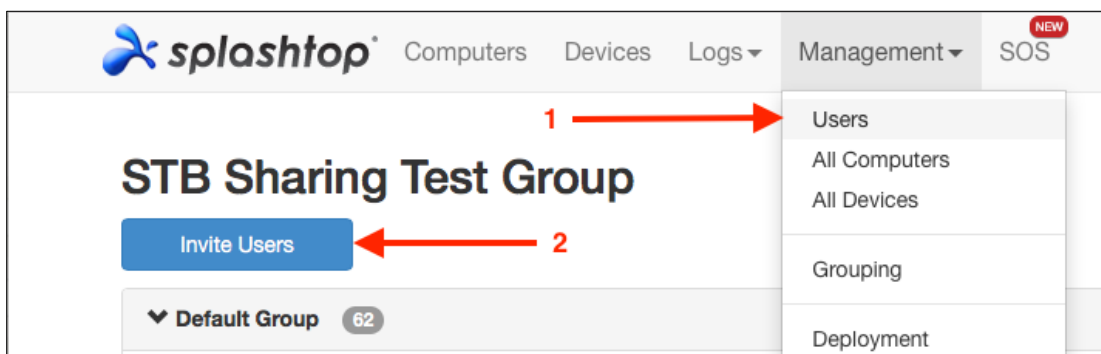
Resource Guide

Thank you for choosing [Splashtop Business Access](#)! This guide takes you through the resources that will help you (and your team) get set up. You can then access your Windows, Mac, and Linux computers from any other Windows, Mac, iOS, Android, or Chromebook device. You'll be able to control your computer and access all your applications, files, and data on the go.

Adding users to your Splashtop Team (only for SBA Pro users)

If your license allows, you can invite users to join the team. Once the users are invited, they can install Splashtop on their own devices and begin remote access (refer to the Installing Splashtop section). [Follow these instructions to add users to your account/team](#). While you add new users, you can assign them different roles – Owner, Administrator or Member. The owner is only one. You can [read more in detail about the authority associated with each of these roles](#).

Figure 1 - Invite users from my.splashtop.com

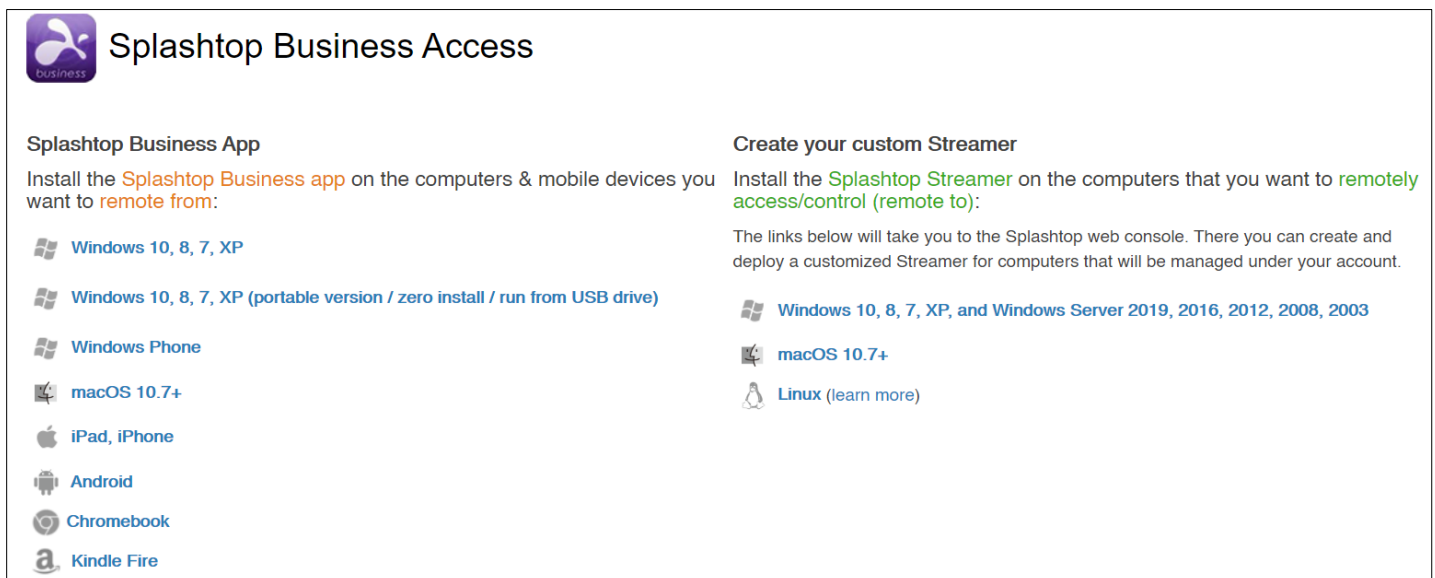


Installing Splashtop

Setting up Splashtop is simple and fast. You can do this easily yourself through your my.splashtop console. Log in to my.splashtop.com with your Splashtop account credentials and follow 3 steps to get started – Install the Splashtop Business app on devices you want to remotely connect from, install the Splashtop Streamer on computers you want to remote in to, and launch the remote session with the App. Read detailed instructions on [how to install Splashtop](#).

Once SBA Pro Members are invited by the Owner, they can download and set up **Login Streamers** on computers they want to remotely access, using their own credentials.

Figure 2 - Download app on devices to remote from and the streamer on devices to remote into



Splashtop Business Access

Splashtop Business App
Install the **Splashtop Business app** on the computers & mobile devices you want to **remote from**:

- Windows 10, 8, 7, XP
- Windows 10, 8, 7, XP (portable version / zero install / run from USB drive)
- Windows Phone
- macOS 10.7+
- iPad, iPhone
- Android
- Chromebook
- Kindle Fire

Create your custom Streamer
Install the **Splashtop Streamer** on the computers that you want to **remotely access/control (remote to)**:

The links below will take you to the Splashtop web console. There you can create and deploy a customized Streamer for computers that will be managed under your account.

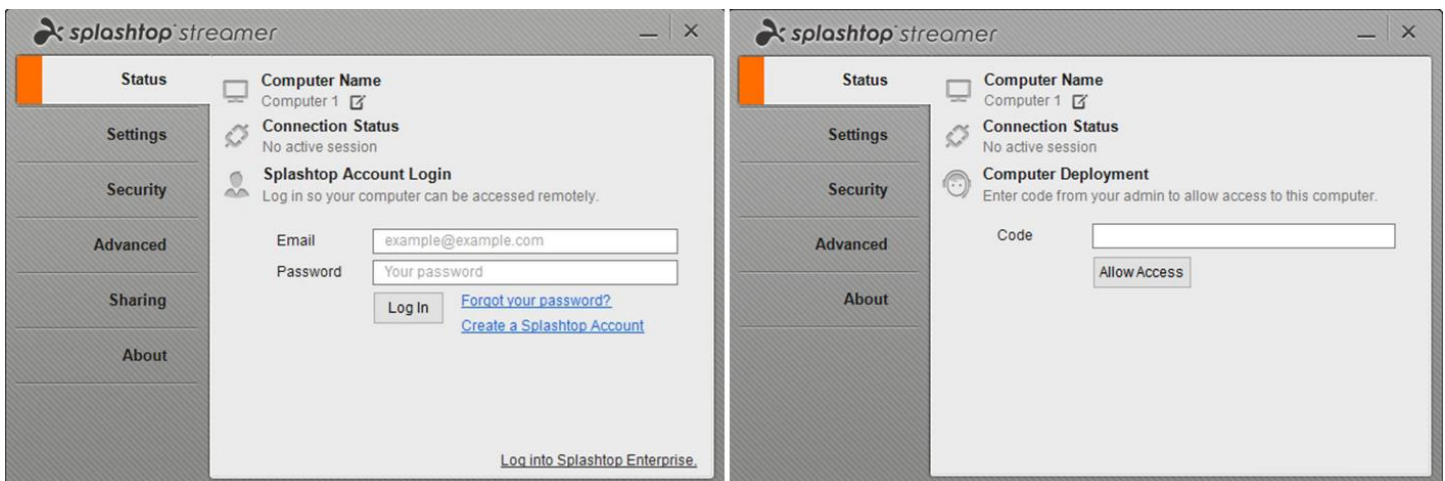
- Windows 10, 8, 7, XP, and Windows Server 2019, 2016, 2012, 2008, 2003
- macOS 10.7+
- Linux (learn more)

Two types of Splashtop Streamers

SBA Pro uses two types of Splashtop Streamers – Login Streamer and Deployment Streamer. Login Streamers are installed by users themselves to set up access to their computers using their own credentials. Deployment Streamers are typically deployed by account owners and admins using a deployment code. A deployment link is then given to other users to install the deployment streamer on their computers.

	Login Streamer	Deployment Streamer
Who can add/remove the Streamer	<ul style="list-style-type: none"> • Owners • Admins • Members 	<ul style="list-style-type: none"> • Owners • Admins • Members only if they are given deployment links
Adding the Streamer	<ul style="list-style-type: none"> • Sign-in with an individual Splashtop ID and password after install 	<ul style="list-style-type: none"> • Install from deployment package found on my.splashtop.com > Management > Deployment. Automatically associates with your team and preferences after install
Default access permissions	<ul style="list-style-type: none"> • The Splashtop ID which is used to sign in to Streamer 	<ul style="list-style-type: none"> • Team Owner • Admins • Specified access permission in custom deployment package
Who manages access permissions	<ul style="list-style-type: none"> • The Splashtop ID which is used to sign in to Streamer 	<ul style="list-style-type: none"> • Team Owner • Admins
Removing the Streamer	<ul style="list-style-type: none"> • Change Splashtop account password • Uninstall Streamer • Streamer owner removes computer from my.splashtop.com > All Computers 	<ul style="list-style-type: none"> • Uninstall Streamer • Team admin removes computer from my.splashtop.com > Management > All Computers

Figure 3 Enter user credentials for the Login Streamer or a 12 digit deployment code for the Deployment Streamer

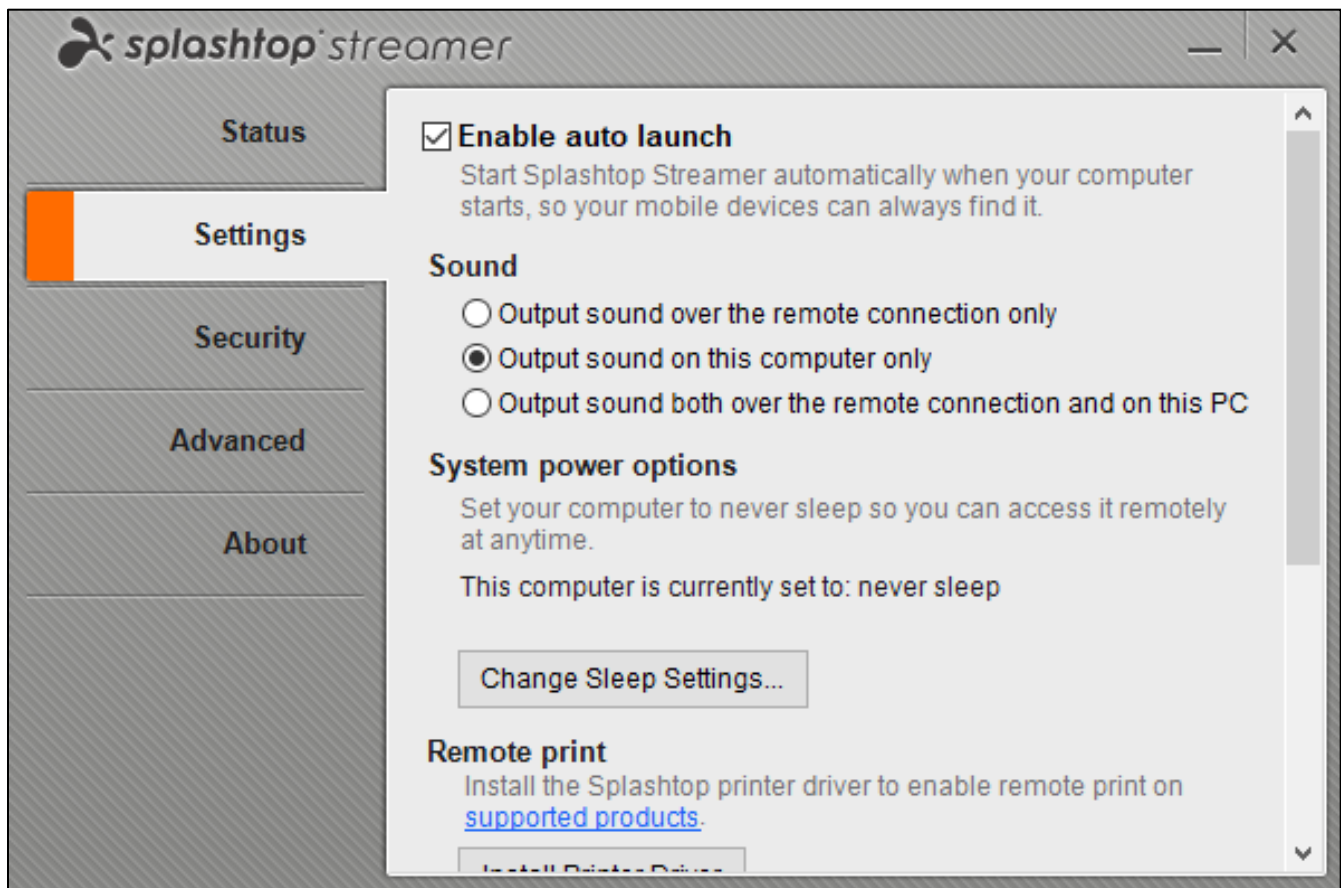


[Read more about the Splashtop Streamers.](#)

Customizing settings on the streamer

When you install the streamer, you will see a few settings that you can customize based on your requirements. Read [an overview of the different streamer settings](#).

Figure 4 - Customize Splashtop Streamer settings



Creating a streamer deployment package and customizing default settings

If you need to install a deployment streamer with the same settings for multiple users, or on multiple computers, you can create a deployment package and select the streamer settings before deploying. This way you don't have to manually configure the settings after installation. Read how you can [customize default settings for the deployment package](#).

Figure 5 - Create a deployment package with default settings

Create Deployment Package

Package Name

Computer Naming Rule

- Use current computer name
- Use custom name + sequence number
e.g. Acme Bakery (005)
- Use custom name + current computer name
e.g. Acme Bakery - Steve's Win7

The name cannot contain these special characters <>,:;"'+=\\|?>

This is the name that's shown in your Splashtop computer lists.
It does not affect the OS computer name.

Import LogMeIn Central computer description when available

Grouping

[Create or manage groups...](#)

General Settings

- Auto-launch streamer**
Automatically launch Splashtop Streamer every time the computer starts.

Idle session timeout
Remote sessions will automatically disconnect after minutes of no activity (0 means no timeout).

- Hide streamer tray icon**
Hide streamer icon on Windows system tray or Mac menu bar.
Check this option to reduce the chance of users tampering with the streamer.
- Enable direct connection**
When on the same network, use direct connection for better performance. Based on your organization's security policy, you may want to disable this option.

Security

- Require Windows or Mac login**
Require entering the computer's user name and password when connecting remotely.

Request permission to connect
Prompt for user's permission at the computer when connecting remotely.

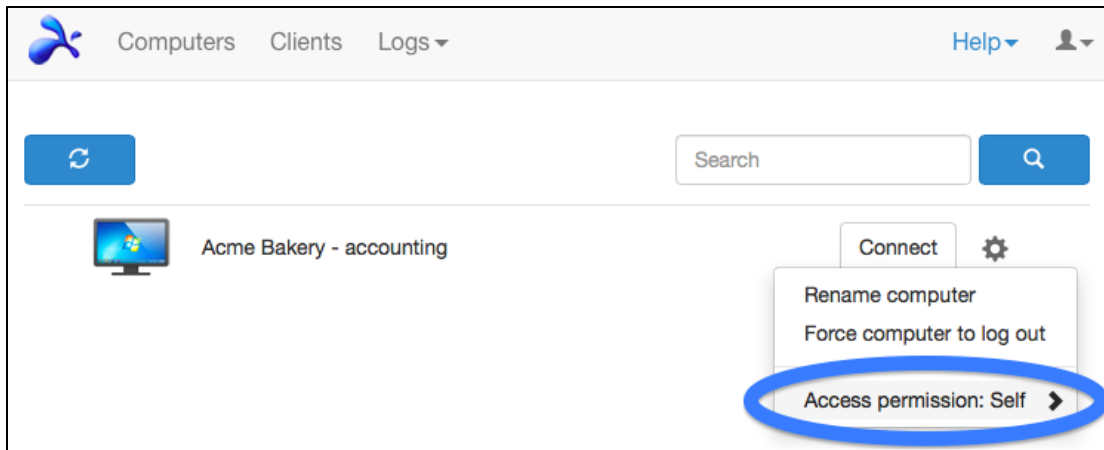
- Reject connection after request expires
- Allow connection after request expires
- Off

Silently mass deploying and installing the deployment streamer

You can create .exe, .msi or .sh files to mass deploy the streamer on multiple computers. Read the [command-line parameters to silently install your deployable Splashtop Streamer](#).

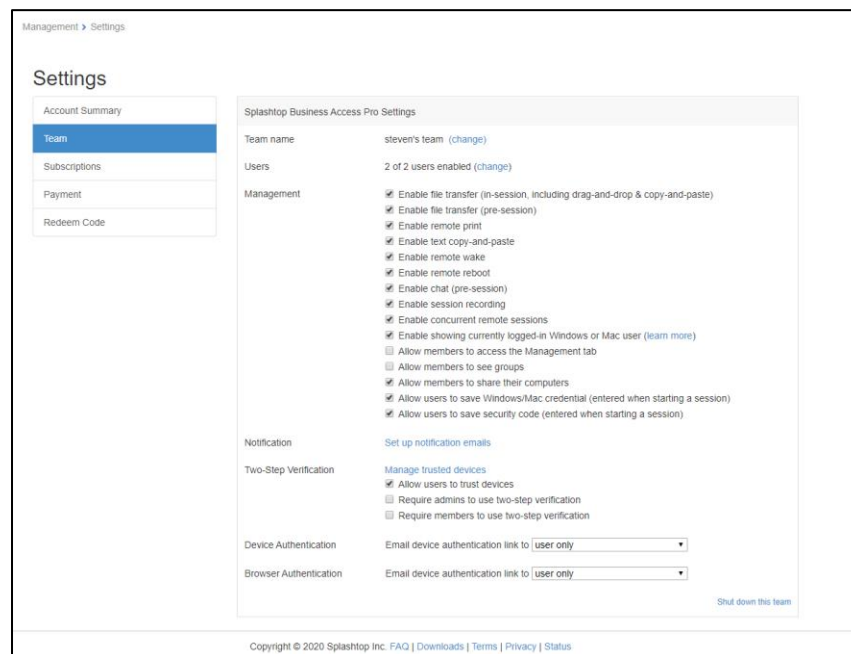
Setting up access permissions

By setting up access permissions, you can give users access to certain computers. Access to a particular computer can be set up in 4 ways – it's accessible only by the team owner, by all admins on the team, by all admins and members of the team, or by certain users (from the same or even different accounts). Read [how to configure the access permissions](#).

Figure 6 - Set up access permissions

Customizing Splashtop Team settings

If you have set up a Splashtop Team with multiple users, you can customize the team settings. Read an overview of the [Splashtop Team settings](#) available to you.

Figure 7 - Customize Splashtop Team settings

Setting up two-factor authentication

Enabling two-factor authentication (2FA) is optional, but highly recommended to improve security. Read about the [requirements and how to set up 2FA](#).

To find more answers and to contact us, [visit Splashtop Business Support](#).